

ANILOX LASER TECHNOLOGY LTD

RAINBOW CELL RANGE

Ani-Flow

Developed for maximum flow for high viscosity gloss and UV applications in the Flexographic and Offset industries.

Ani-Flow White

Used for the applications of high opacity white lay-down

Ani-Plus I/II

I. Developed for high volume ink transfer for Water-based applications in the paper and corrugated print industries

II. For high line count and volume UV and SOLVENT applications. Specifically developed for use with HD plate technology.

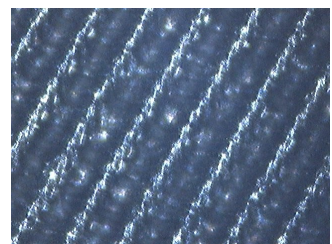
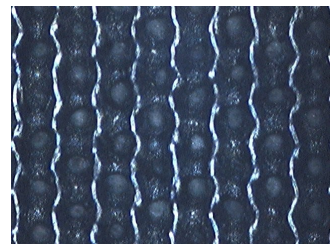
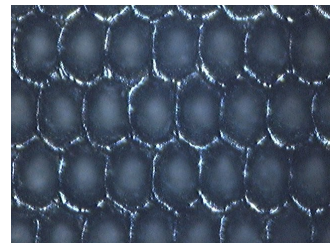
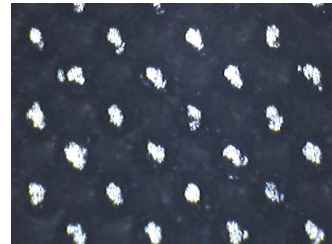
Ani-Max

For UV anti-spitting applications

Ani-Pro

A Tri-Helical format developed for direct Flexo and Offset dense inks.

The **RAINBOW** range is developed for extended print runs and reduced cleaning cycles.



Unit H4, Lyntown Trading Estate
Lynwell Road
Eccles
Manchester
M30 9QG

Tel +44(0) 161 707 1717
Fax +44(0) 161 707 7317
sales@aniloxlt.co.uk
www.aniloxlt.co.uk